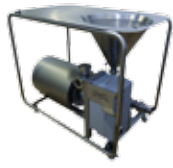


**1 Alfa Laval Hybrid Powder Mixer**  
The Alfa Laval Hybrid Powder Mixer features two pumps with a shared drive, eliminating the need for additional pumps. Its design allows for up to 4-bar outlet pressure, ensuring speed and efficiency in most applications.



**2 Alfa Laval Rotary Jet Mixer**  
Based on rotary jet head technology, the Alfa Laval Rotary Jet Mixer secures fast mixing and efficient tank cleaning. It can also be used in combination with the Alfa Laval Hybrid Powder Mixer to improve powder dissolving.



**3 Alfa Laval EnSaFoil Impeller**  
Designed to ensure even product speed over the full length of the agitator's wings, Alfa Laval EnSaFoil combines highly efficient agitation with lower energy consumption. Shear is also reduced, which avoids damage to particles.



**4 Alfa Laval LKH Prime Pump**  
Based on the market-leading Alfa Laval LKH pump range, Alfa Laval LKH Prime is a versatile, energy efficient, self-priming pump that uses a combination of air-screw technology and advanced design to meet the most stringent requirements.



**5 Alfa Laval OptiLobe Pump**  
The Alfa Laval OptiLobe Rotary Lobe Pump offers reliable fluid transfer and gentle product handling in combination with low pulsation, low shear, and low noise characteristics.



**6 Alfa Laval LKH Pump**  
The wide range of Alfa Laval centrifugal pumps ensures the right pump can be selected for every application, making sure products and their sensitive ingredients are not compromised.



**7 Alfa Laval SRU Pump**  
Strong, sturdy, and reliable, Alfa Laval SRU Rotary Lobe pumps ensure gentle and efficient pumping while minimizing damage to ingredients, stabilizer complexes, and particulates.



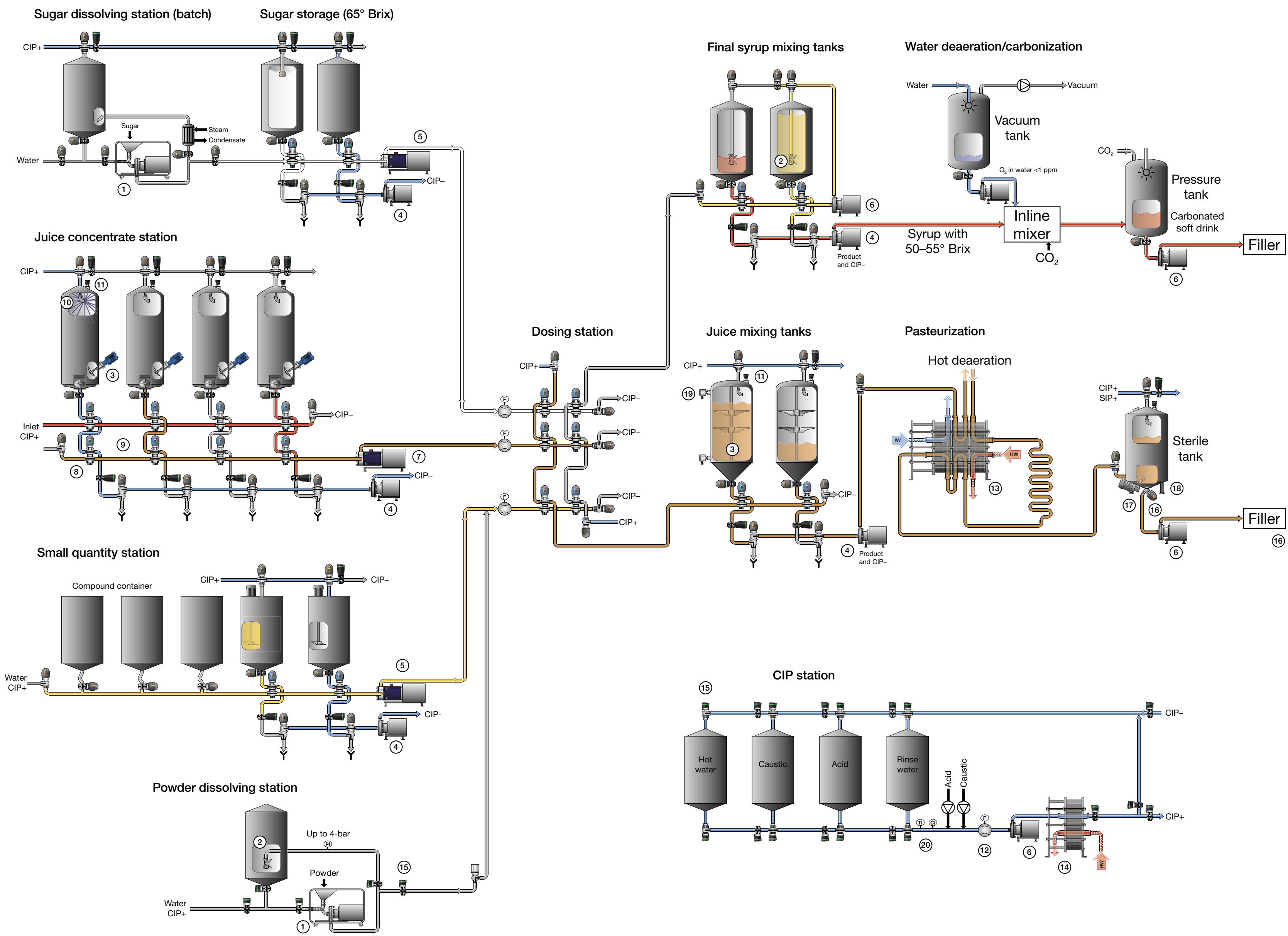
**8 Alfa Laval Unique Mixproof Valve**  
These valves enable the simultaneous flow of two different fluids through the same valve without risk of cross-contamination. For cleaning in demanding applications, utilization of Alfa Laval SpiralClean is an option.



**9 Alfa Laval Valve Matrix**  
One complete delivery covers all requirements. The plug-and-play solution is quick to install, and Alfa Laval can make design and layout suggestions for easy selection.



**10 Alfa Laval TJ20G**  
This tank cleaning machine eliminates residues while reducing cycle times and costs for energy, water, and cleaning agents.



Schematic process chart

**11 Alfa Laval Rotacheck+**  
This monitoring device validates the Cleaning-in-Place process of virtually any rotary jet head tank cleaning machine. Its unique built-in intelligence and advanced analogue sensing technology ensure unprecedented levels of accuracy and reliability.



**12 Alfa Laval Flow Transmitter**  
The design of the Alfa Laval Flow Transmitter ensures no pressure drop, which is important for viscous products. The smoothness of the product-wetted interiors is maintained, making it very easy to clean.



**13 Alfa Laval FrontLine Heat Exchanger**  
With its optimized design, the Alfa Laval FrontLine is the premier choice for hygienic processes that require high performance combined with gentle product treatment, long operating times, and superior cleanability.



**14 Alfa Laval BaseLine Heat Exchanger**  
Simple and sturdy, with design pressure of 10 bar and a cost-effective frame, the Alfa Laval BaseLine fulfils most heating and cooling tasks for lower viscosities.



**15 Alfa Laval ThinkTop D30**  
Compact and intelligent, the Alfa Laval ThinkTop D30 provides simple and reliable valve control. With its integrated plug-and-play system, it is user friendly and highly suitable for basic applications.



**16 Alfa Laval Unique DV-ST**  
The Alfa Laval Unique DV-ST valve is ideal for use in aseptic processes, such as cold aseptic filling machines.



**17 Alfa Laval Magnetic Mixer UltraPure**  
Used for aseptic applications with hygienic demands, the unique levitating impeller design enables effective mixing right down to the last drop.



**18 Alfa Laval Weighing System UltraPure**  
A comprehensive solution for hygienic process weighing and measurement of liquid level, can also be used for regulating of mixer rotation speed or for dosing in to a batch tank.



**19 Alfa Laval Level Switches**  
Provides accurate and reliable remote liquid level indication for hygienic applications. This includes low-viscosity liquids, such as water and juice, as well as high-viscosity liquids such as concentrates or syrup.

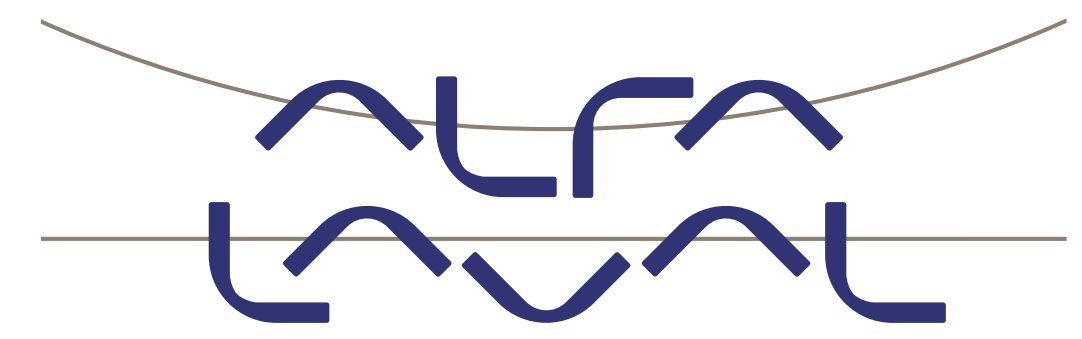


**20 Alfa Laval Conductivity and Temperature Transmitters**  
These transmitters are hygienically designed, provide accurate and reliable measurement of a process liquid's ability to carry electrical currents. Particularly suitable for applications that require the separation of media and/or the measurement of cleaning agents in Cleaning-in-Place equipment.



# Flavours of the future

Hygienic equipment for reliable and sustainable beverage production



www.alfalaval.com/beverage